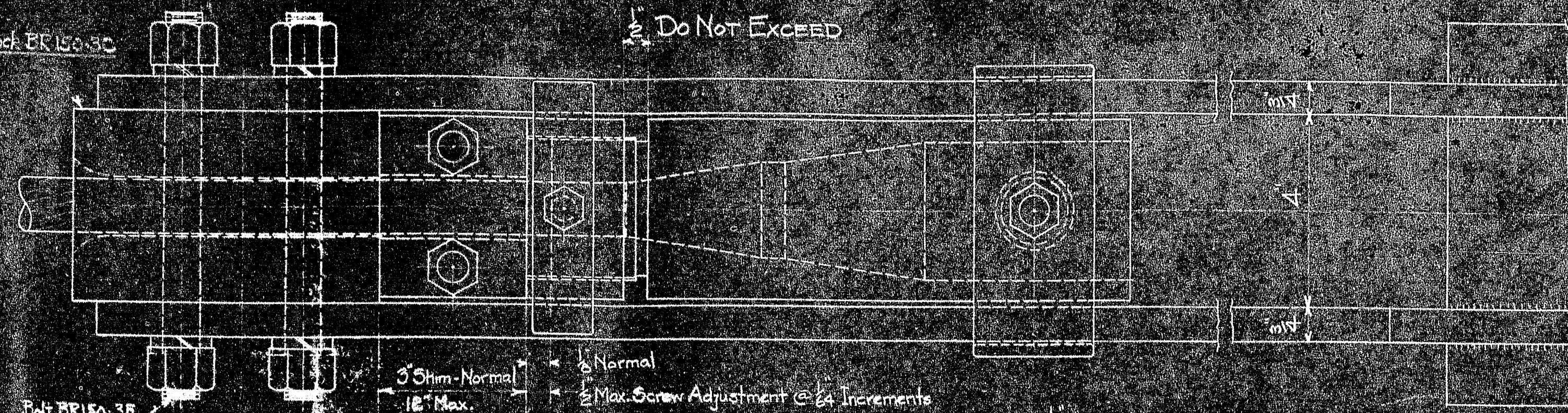
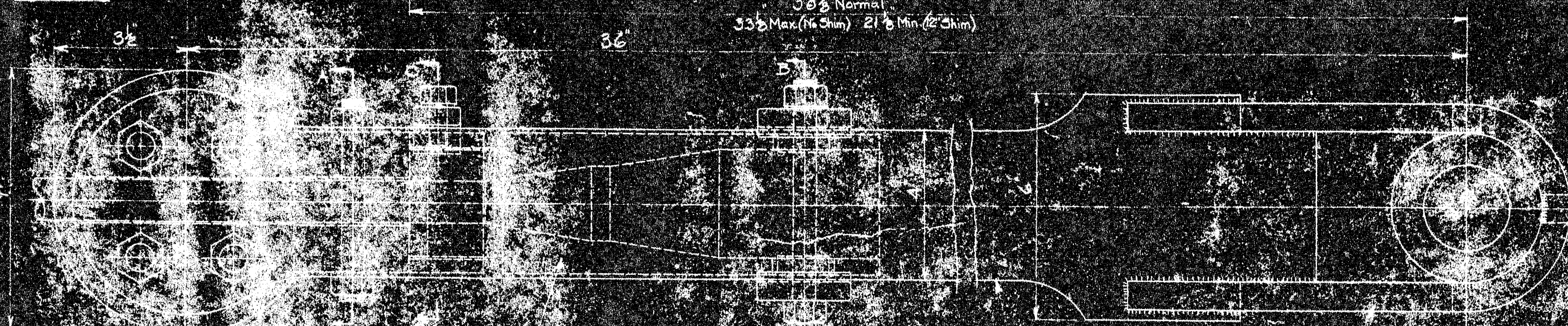


Block BR150-3C

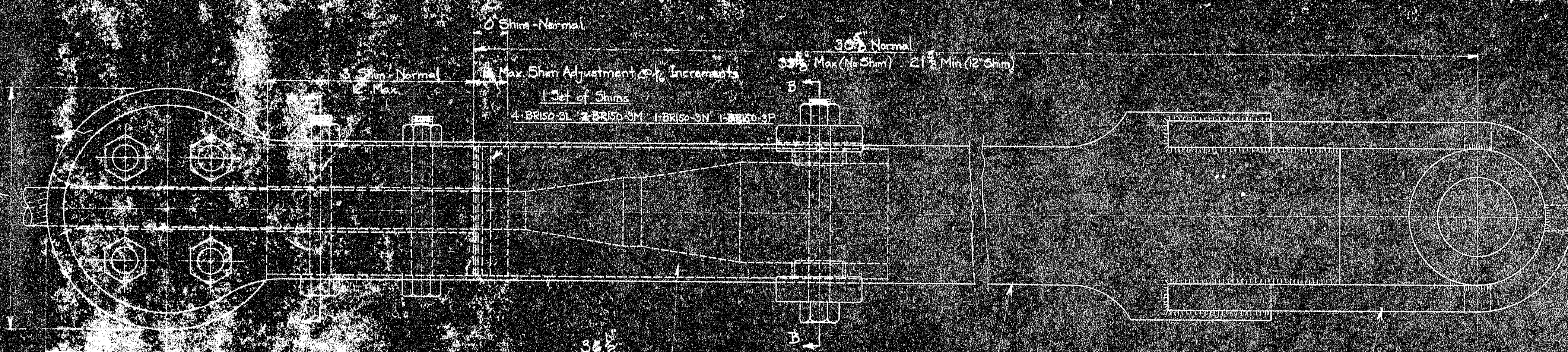
Do Not Exceed



Left BR150-3E

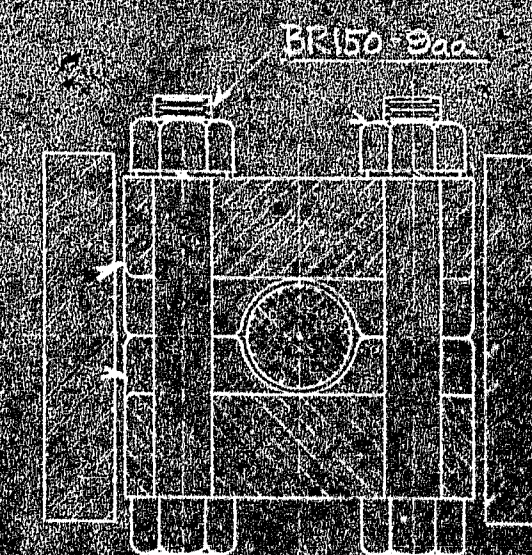


ASSEMBLY OF LONGITUDINAL STAY AND TRUSS CONNECTION AT PANEL POINTS 2-3-4-5-6-7-27-28-29-30-31 and 32



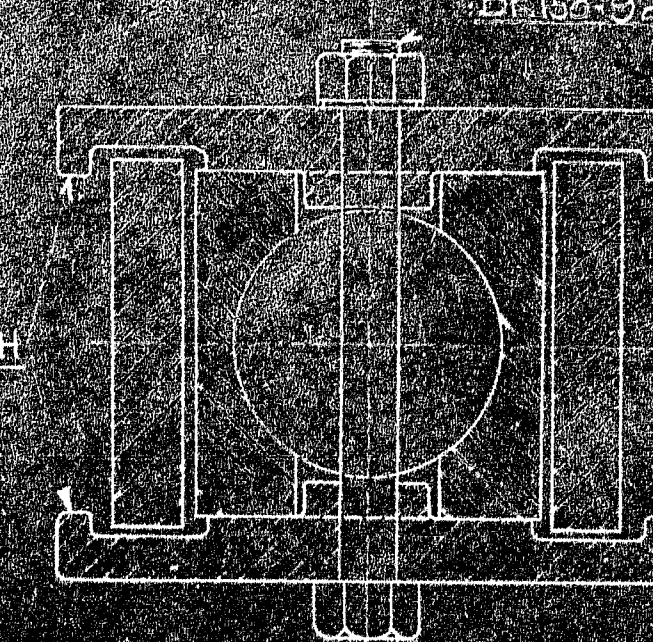
ASSEMBLY OF LONGITUDINAL STAY AND TRUSS CONNECTION AT PANEL POINTS 7-8-9-10-11-13-21-23-24-25-26 and 27

BR150-3K

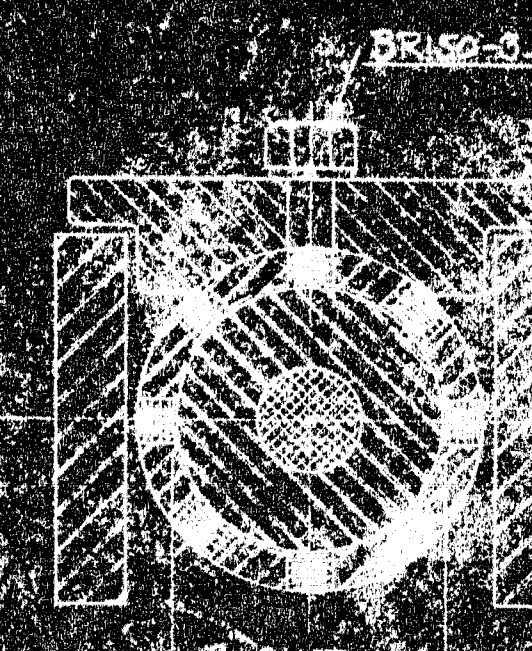


SECTION AA

BR150-3H



SECTION BB



SECTION CC

		BILL OF MATERIAL						
		JOHN A. ROEBLING'S SONS CO., TRENTON, N. J.						
		QTY	Washer BR150-3F Riveted	1033-42	DEER ISLE BRIDGE REINFORCEMENT			
		QTY	Nut BR150-3G	1033-44	ASSEMBLY OF LONGITUDINAL STAYS			
		QTY	Washer BR150-3H	1033-41	AND TRUSS CONNECTIONS			
		QTY	General Revisions	2-7-44				
		BY	REVISIONS		DATE			
BR150-3	Assembly of Truss Connection	APPROVED				SCALE 3/4"=1'-0"	SERIAL	SHEET
BR150-7	Details of Truss Connection	ROBINSON AND STEINMAN				DR. 1000-1-21-44	BR150	10
BR150-7	Details of Longitudinal Stays	MARCH 3, 1944				TR.		
BR150-9	Bracket Details	CH. DR.				CH.		
DWG. NO.	TITLE							
REFERENCE DRAWINGS								

